

BRITAIN'S NEET CRISIS IS NOT GOING AWAY

Today, there are close to
1m young people NEET
(not in education, employment or training)

That's **1 in 5** **16-24** year olds

The number of NEETs in the UK has barely changed since records began in **2000**



IT'S DAMAGING TO BOTH YOUNG PEOPLE AND SOCIETY

More than half of all NEETs spend more than



out of education, training or employment.

Spending just six months NEET can cause lifetime wage scarring between

£50-£225k

compared to peers who spent no time NEET or graduated from university.

It's estimated that young people currently NEET will cost the UK at least

£34bn

Today, **120,000** children born in 2000 are at-risk of becoming NEET and collectively stand to lose up to

£6.4bn

in lost wages in their lifetime.

WE MUST HELP YOUNG PEOPLE MOVE SUCCESSFULLY FROM SCHOOL TO WORK

At the root of the problem is the broken transition from school to work for young people from disadvantaged backgrounds.

Careers guidance has become patchy and of variable quality, as careers education is no longer a statutory requirement.

With minimal work-related experience or training available, it's unrealistic to expect young people to be job ready straight out of education.

Businesses are failing to invest resources in effective on-the-job training opportunities for young people.

CHANGE MUST COME FROM THE TOP

to

Impetus-PEF is calling for a **5-YEAR** Cross-departmental strategy



by the end of the next Parliament

driven by clear accountability at the

HEART OF GOVERNMENT AND

OVERSEEN DIRECTLY BY THE PRIME MINISTER

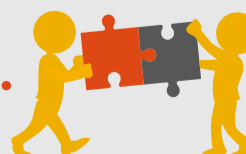
IT SHOULD FOCUS ON FOUR KEY AREAS



All schools should be responsible for monitoring the progression of students benefitting from the Pupil Premium – during and post-education.



Public funding should be focused to support higher-quality further education and apprenticeships provision.



Local authorities should build sector-wide partnerships to find local labour market solutions for young people.



Job-search services should be tailored for young people, with greater emphasis on careers education in schools and more coordinated and focused careers guidance post-education.